



BEAUFORT GREEN

Edith Terrace, SW10

£3,400 Per month



Situated in the heart of Chelsea, this recently renovated two-bedroom apartment occupies the raised ground floor of an attractive period building. Finished in fresh, neutral tones throughout, the property offers well-proportioned accommodation ideal for modern living.

The spacious reception room benefits from high ceilings, wooden flooring, a decorative fireplace, and a large bay window providing excellent natural light. Both double bedrooms are located at the rear of the apartment, enjoying a quiet, south-facing aspect and views over the private patio garden. The bedroom further benefits from direct access to the patio.

A key feature of the property is the private garden with a freestanding office, ideal for home working or additional flexible space.

Ideally located within easy reach of the cafés, restaurants, and boutiques of the King's Road and Fulham Road, with excellent transport links nearby. Available immediately.



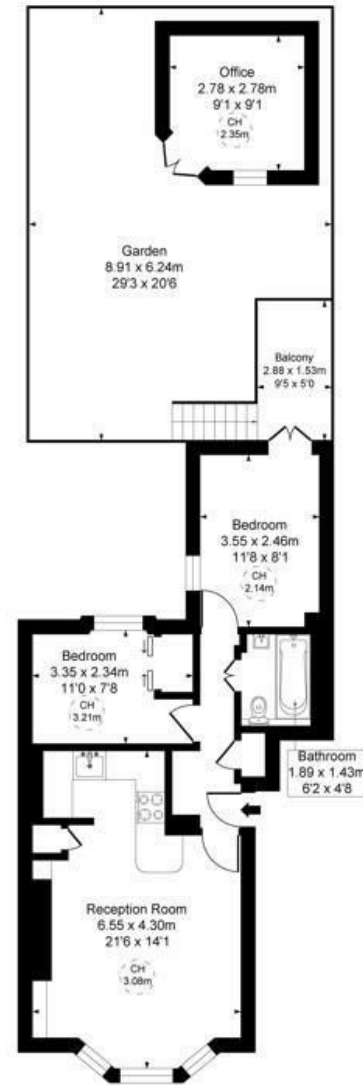


BEAUFORT GREEN



BEAUFORT GREEN

Edith Terrace, SW10
Approximate Gross Internal Area
57.75 sq m / 622 sq ft
(CH = Ceiling Heights)



Ground Floor

At a Glance.

- Raised Ground Floor
- Period Building
- Garden
- Prime Chelsea
- Available immediately

This plan is not to scale. It is for guidance and not for valuation purposes.
All measurements and areas are approximate only, and have been prepared in accordance with the current edition of the RICS Code of Measuring Practice.

BEAUFORT GREEN

02074594100

charlie@beaufortgreen.co.uk

263 New Kings Road
London
SW16 1DB